

Umstell Farb-Tabelle RAF Britisch Standard Nr. 381C
auf moderne B.S. 4800 und andere Standard Farben.

+

Farbchips

*(Gescand von meine original Farbchips, und sind hier verkleinerte Kopien.
Können deswegen etwas abweichen!)*

Jan Hermkens
Oss, Niederlande.

Umstell Farb-Tabelle RAF Britisch Standard Nr. 381C auf moderne B.S. 4800 und andere Standard Farben.

Leider habe ich hiervon keine Misch/ Umstell-Tabelle, nur die Britisch Standard Nr. (B.S. Nr. 381C), umgestellt in die heutige B.S. 4800 (Standard or Trade Paint Range), oder in Tekaloid Paint Card Nr, oder in Sikkens Nr., und nur einige umgestellt in RAL Nummer, oder USA FS 595a. **Die Engländer kennen leider keine RAL Nummer!**

<u>1; Bezeichnung</u>	<u>2; BS.Nr. 381C</u>	<u>3; B.S. 4800</u>	<u>4; Tekaloid</u>	<u>5; Sikkens 3031, oder RAL</u>	<u>6; USA. FS 595a</u>
Aluminium Dope	----	----	----	RAL 9001	----
Azure Blue	104	20.C.37	----	TO.20.50	FS.35231
Black	----	----	----	RAL 9004	FS.37038
Blue	108	----	----	----	FS.35044
Dark Earth	450	08.B.29	----	E8.25.55	FS.30118
Dark Green	641	12.B.29	----	I0.10.30	FS.34096
Dark Sea Grey	638	18.B.25	----	S0.05.45	FS.36293
Dark Slate Grey	----	12.B.25	----	H2.12.25	FS.34127
Dark Mediterran. Blue	----	----	----	----	FS.35109
Deep Sky Blue	111	----	----	----	FS.25102
Duck Egg Blue	381	----	----	----	FS.35622
Engine Grey	---	---	---	---	FS.16081
Extra Dark Sea Grey	640	00.A.13	---	S0.10.30	FS.36118
Extra Dark Sea blue	---	----	---	---	FS.34092
Grey Green	---	----	---	I0.10.50	FS.24533
Idenfic. Blue(Bright)	---	---	BG.18.108	V0.47.19(glänzend)	FS.35044
Idenfic. Blue(Dull)	110	---	BG.18.A.12	U4.15.10	FS.35044
Idenfication Green	---	---	BG.18.218	I0.50.40(glänzend)	----
Idenfic. Red (Bright)	538	---	BG.18.538	C2.60.25(glänzend)	FS.31136
Idenfic. Red (Dull)	---	04.C.39	----	C4.30.50	FS.30109
Idenfication Yellow	356	08.E.51	BG.18.356	RAL 1004	FS.33538
Idenfication White	---	---	---	G0.04.84	---
Light Earth	---	08.B.21	---	E4.30.50	FS.20400
Light Green	---	---	BG.18.F.16	G8.20.30	FS.34258
Light Mediterran. Blue	---	----	---	---	FS.25184
Light Slate Grey	639	12.B.21	---	I0.10.40	FS.34159
Night Black	642	---	---	RAL 9005	FS.27028
Medium Sea Grey	637	---	BG.13.K.90	ON.00.50	FS.36440
Middle Stone	361	08.C.35	---	E8.30.50	FS.30266
N.I.V.O (1918)	---	12.C.39	---	I0.10.30	---
Ocean Grey	---	---	---	RAL 7012	FS.36173
PC 10 (W.W. I Cellulose Lack) 298	---	08.C.39	---	F6.20.30 (glänzend)	---
PC 12 (W.W. I Cellulose Lack) ---	---	10.B.29	---	C4.30.30 (glänzend)	---
Primer Green	---	---	---	G8.30.70	---
PRU Blue	636	----	BG.18.A.10	Q0.10.40	FS. 35164
Red	538	---	---	---	FS.31136
Silver	---	---	---	---	FS.17178
Sky	210	12.B.17	---	I0.10.70	FS.34424
Sky Type S	210	12.B.17	----	10.10.70	FS-24424
Sky Blue	---	---	---	---	FS.35622
Sky Grey	---	---	---	SN.02.57	FS.36595
Yellow	356	08.E.51	BG.18.356	RAL 1004	FS.33538

Bei Sky Type S, steht die S für Silky (Seideglanz) oder Smooth. Aber jede Farbe kann also die S als zufügung haben !

Masstabseffekt :

Ein modell reflektiert aufgrund seiner geringere Grösse eine viel geringere Menge an Licht, deswegen muss man ein Anteil Weiss beimischen. Masstab : 2= % Zugabeanteil Weiss zur Basis Farbe.

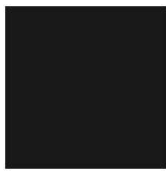
Zumbeispiel; Masstab 1:4. 4:2= 2% Weiss beimischen. Masstab 1:6. 6:2= 3% Weiss beimischen

Klarlack (egal Matt oder Glänzend)

Jede Schicht Klarlack macht die Farben dunkler, kann man mit etwas extra Weiss aushelfen.



Azure Blue



Black



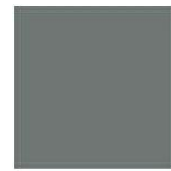
Blue



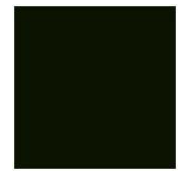
Dark Earth



Dark Green



Dark Sea Grey



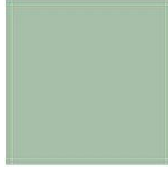
Dark Slate Grey



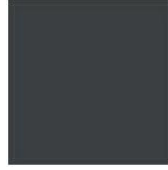
Dark Med. Blue



Deep Sky
(Blue)



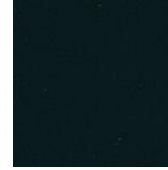
Duck Egg Blue



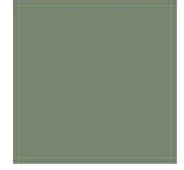
Engine Gray



Extra Dark
Sea Grey



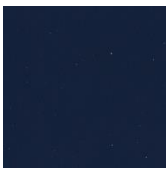
Extra Dark
Sea Blue



Grey Green



I. D. Blue Bright
(Roundels)



I.D. Blue Dull



I.D. Red Bright
(Roundels)



I.D. Red Dull



I.D. Yellow
(Roundels)



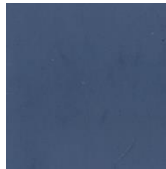
I.D. White



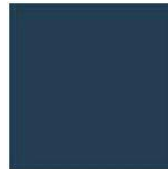
Light Earth



Light Green



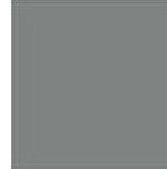
Light Med. Blue



Light Slate Grey



Black
(Night Black)



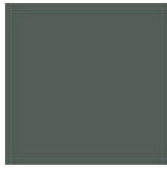
Medium Sea Grey



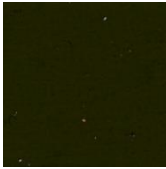
Mid. Stone



N.I.V.O. (1918)



Ocean Grey



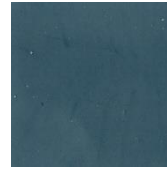
PC 10 (W.W. I)



PC 12 (W.W. I)



Primer Green



P.R.U. Blue



Red



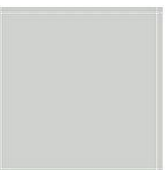
Silver



Sky



Sky type S



Sky Blue



Sky Grey



Yellow

Andere Farben ohne Umstell Tabelle.



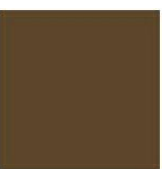
Dark Grey



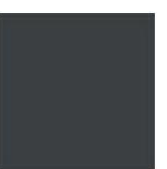
Dark Sea Green



Doped Fabric



Earth Brown



Engine Grey



Extra Dark
Sea Green



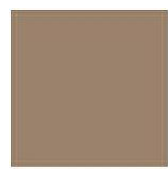
Light Sea Grey



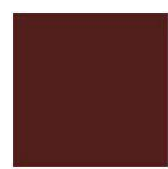
Light Stone



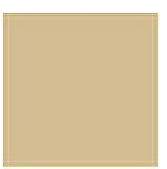
NATO Green



RAF Desert Pink



Red Brown



Undoped Fabric



Very Dark Drab