

Convert Table Colors Royal Flying Corps/Royal Air Force;

British Standard Nr. 381C
to modern B.S. 4800
and other Standard Colors.

+

Color Chips

(Scanned from my original Colorchips, and are here reduced copies.

Therefore they can deviate!)

Jan Hermkens
Oss, Netherlands.

Convert Table British Standard Nr. 381C to modern B.S. 4800 and other Standard Colors.

Unfortunaly I don't have from these no Convert-Mix table., Only the British Standard Nr. (B.S. Nr. 381C), converted in the modern B.S. 4800 (Standard or Trade Paint Range), or in Tekaloid Paint Card Nr, or in Sikkens Nr., and just a few converted to RAL numbers or USA FS 595a. **The British don't have RAL Numbers!**

<u>Name</u>	<u>1; BS.Nr. 381C</u>	<u>2; B.S. 4800</u>	<u>3; Tekaloid</u>	<u>4; Sikkens 3031, oder RAL</u>	<u>5; USA. FS 595a</u>
Aluminium Dope	---	---	---	RAL 9001	---
Azure Blue	104	20.C.37	----	TO.20.50	FS.35231
Black	---	----	----	RAL 9004	FS.37038
Blue	108	----	----	----	FS.35044
Dark Earth	450	08.B.29	----	E8.25.55	FS.30118
Dark Green	641	12.B.29	----	I0.10.30	FS.34096
Dark Sea Grey	638	18.B.25	----	S0.05.45	FS.36293
Dark Slate Grey	----	12.B.25	----	H2.12.25	FS.34127
Dark Mediterran. Blue	----	----	----	----	FS.35109
Deep Sky Blue	111	----	----	----	FS.25102
Duck Egg Blue	381	----	----	----	FS.35622
Engine Grey	---	---	---	---	FS.16081
Extra Dark Sea Grey	640	00.A.13	---	S0.10.30	FS.36118
Extra Dark Sea blue	---	----	---	---	FS.34092
Grey Green	---	----	---	I0.10.50	FS.24533
Idenfic. Blue(Bright)	---	---	BG.18.108	V0.47.19 (<i>glossy</i>)	FS.35044
Idenfic. Blue(Dull)	110	---	BG.18.A.12	U4.15.10	FS.35044
Idenfication Green	---	---	BG.18.218	I0.50.40 (<i>glossy</i>)----	
Idenfic. Red (Bright)	538	---	BG.18.538	C2.60.25 (<i>glossy</i>)	FS.31136
Idenfic. Red (Dull)	---	04.C.39	----	C4.30.50	FS.30109
Idenfication Yellow	356	08.E.51	BG.18.356	RAL 1004	FS.33538
Idenfication White	---	---	---	G0.04.84	---
Light Earth	---	08.B.21	---	E4.30.50	FS.20400
Light Green	---	---	BG.18.F.16	G8.20.30	FS.34258
Light Mediterran. Blue	---	----	---	---	FS.25184
Light Slate Grey	639	12.B.21	---	I0.10.40	FS.34159
Night Black	642	---	---	RAL 9005	FS.27028
Medium Sea Grey	637	---	BG.13.K.90	ON.00.50	FS.36440
Middle Stone	361	08.C.35	---	E8.30.50	FS.30266
N.I.V.O (1918)	---	12.C.39	---	I0.10.30	---
Ocean Grey	---	---	---	RAL 7012	FS.36173
PC 10 (W.W. I Cellulose paint)	298	08.C.39	---	F6.20.30 (<i>glossy</i>)	---
PC 12 (W.W. I Cellulose paint)	---	10.B.29	---	C4.30.30 (<i>glossy</i>)	---
Primer Green	---	---	---	G8.30.70	---
PRU Blue	636	----	BG.18.A.10	Q0.10.40	FS. 35164
Red	538	---	---	---	FS.31136
Silver	---	---	---	---	FS.17178
Sky	210	12.B.17	---	I0.10.70	FS.34424
Sky Type S	210	12.B.17	----	10.10.70	FS-24424
Sky Blue	---	---	---	---	FS.35622
Sky Grey	---	---	---	SN.02.57	FS.36595
Yellow	356	08.E.51	BG.18.356	RAL 1004	FS.33538

About Sky Type S; S stands for Silky oder Smooth.

Scale effect:

A model reflects because of his smaller size a less amount light, therefore one has to add a part of white.

Scale: 2= % supplement White to the basis color.

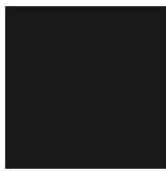
For example; Scale 1:4. 4:2= adding 2% White. Scale 1:6. 6:2= adding 3% White

Clear Paint (All the same, Matt or Glossy)

Each layer Clear paint makes the color darker. It can help with a little bit extra White.



Azure Blue



Black



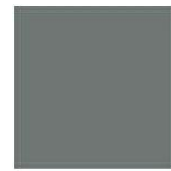
Blue



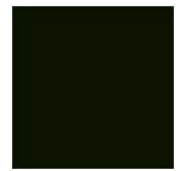
Dark Earth



Dark Green



Dark Sea Grey



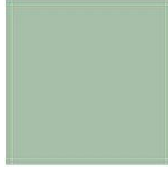
Dark Slate Grey



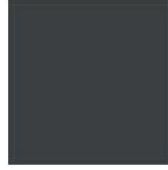
Dark Med. Blue



Deep Sky
(Blue)



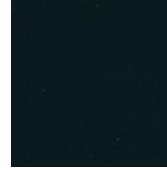
Duck Egg Blue



Engine Gray



Extra Dark
Sea Grey



Extra Dark
Sea Blue



Grey Green



I. D. Blue Bright
(Roundels)



I.D. Blue Dull



I.D. Red Bright
(Roundels)



I.D. Red Dull



I.D. Yellow
(Roundels)



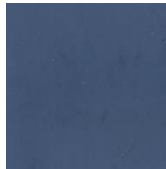
I.D. White



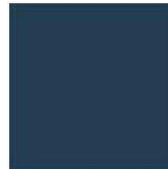
Light Earth



Light Green



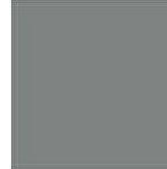
Light Med. Blue



Light Slate Grey



Black
(Night Black)



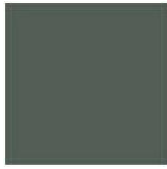
Medium Sea Grey



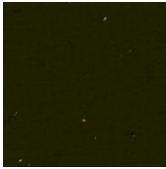
Mid. Stone



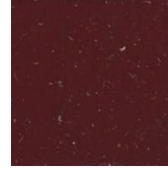
N.I.V.O. (1918)



Ocean Grey



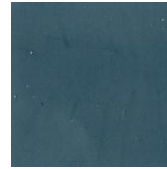
PC 10 (W.W. I)



PC 12 (W.W. I)



Primer Green



P.R.U. Blue



Red



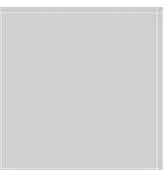
Silver



Sky



Sky type S



Sky Blue



Sky Grey



Yellow

Other Colors without a Convert Table.



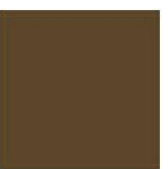
Dark Grey



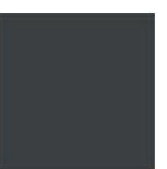
Dark Sea Green



Doped Fabric



Earth Brown



Engine Grey



Extra Dark
Sea Green



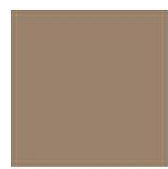
Light Sea Grey



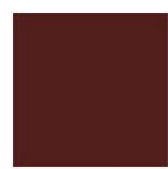
Light Stone



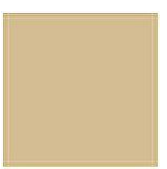
NATO Green



RAF Desert Pink



Red Brown



Undoped Fabric



Very Dark Drab